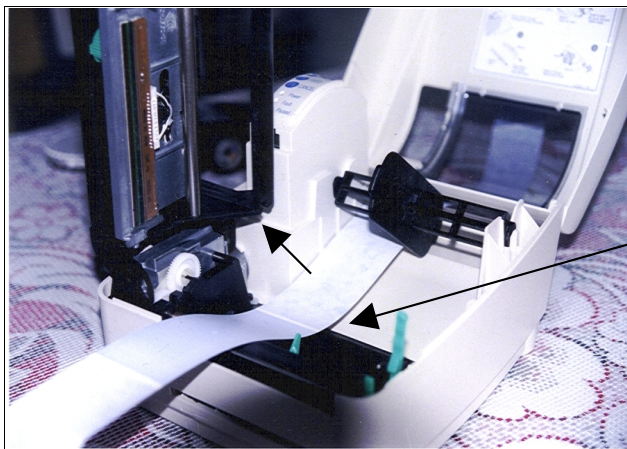


Setting up a Datamax E-4205e

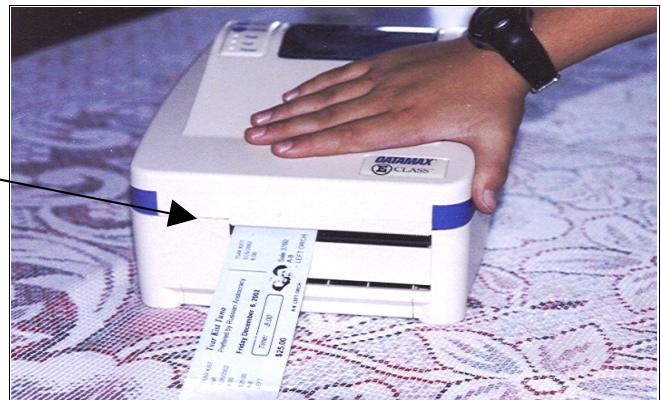
1. Load the ticket stock

- Unlock the printhead and lift it so it is vertical.
- Push the stock to the left side.



- Close the printhead and push it down until the turquoise latch holds it down.
- Push the turquoise guide so it is guiding the stock and holding it against the left side of the paper path.

- When you close the cover, here is how it should look.



2. Install the printer driver

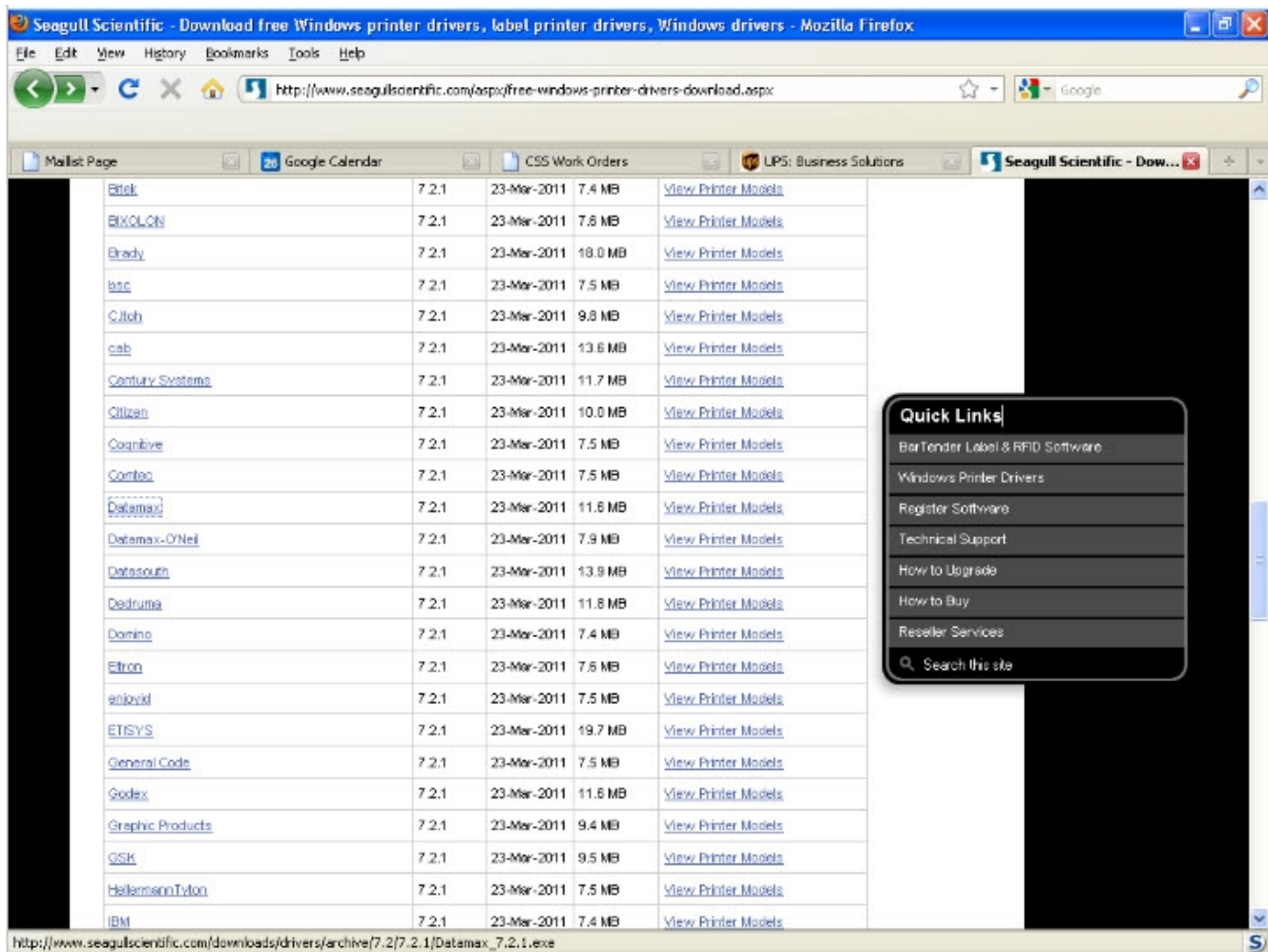
We recommend downloading the latest Datamax driver from Seagull Scientific.

Type this link into your browser:

<http://www.seagullscientific.com/asp/free-windows-printer-drivers-download.aspx>

The following screen will appear: Click on the “Datamax” link and you will be able to download the correct driver and save the Datamax_7.2.1.exe file to your local computer drive. Once copied, you will need to install the driver. **If you need help here, please call Center Stage Software’s support line at 831-920-1254.**

If you need to install the driver from a CD, [please click here](#) for instructions.

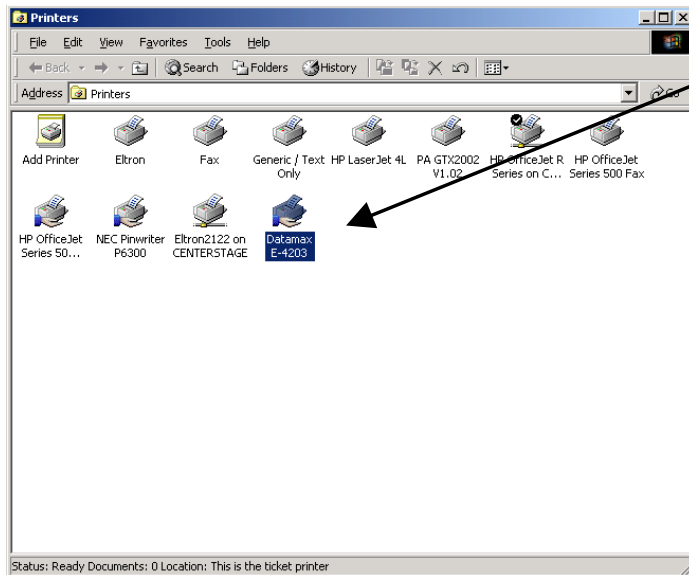


The screenshot shows a Mozilla Firefox browser window displaying the Seagull Scientific website. The page title is "Download free Windows printer drivers, label printer drivers, Windows drivers". The browser address bar shows the URL: <http://www.seagullscientific.com/asp/free-windows-printer-drivers-download.aspx>. The page content is a list of printer models with columns for model name, version (7.2.1), date (23-Mar-2011), size (in MB), and a "View Printer Models" link. The "Datamax" link is highlighted in blue. A "Quick Links" sidebar is visible on the right, containing links to BarTender Label & RFID Software, Windows Printer Drivers, Register Software, Technical Support, How to Upgrade, How to Buy, and Reseller Services. The footer of the page shows the URL: http://www.seagullscientific.com/downloads/drivers/archive/7.2.1/Datamax_7.2.1.exe.

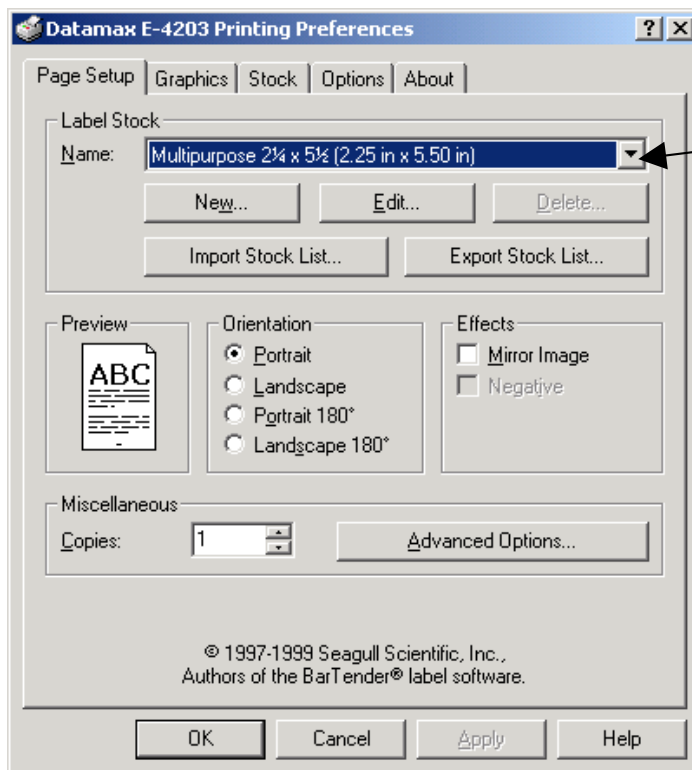
Printer Model	Version	Date	Size (MB)	Action
Brief	7.2.1	23-Mar-2011	7.4 MB	View Printer Models
BIXOLON	7.2.1	23-Mar-2011	7.6 MB	View Printer Models
Brady	7.2.1	23-Mar-2011	18.0 MB	View Printer Models
busc	7.2.1	23-Mar-2011	7.5 MB	View Printer Models
Citich	7.2.1	23-Mar-2011	9.8 MB	View Printer Models
cab	7.2.1	23-Mar-2011	13.6 MB	View Printer Models
Century Systems	7.2.1	23-Mar-2011	11.7 MB	View Printer Models
Citizen	7.2.1	23-Mar-2011	10.0 MB	View Printer Models
Cognibre	7.2.1	23-Mar-2011	7.5 MB	View Printer Models
Comtec	7.2.1	23-Mar-2011	7.5 MB	View Printer Models
Datamax	7.2.1	23-Mar-2011	11.6 MB	View Printer Models
Datamax-O'Neil	7.2.1	23-Mar-2011	7.9 MB	View Printer Models
Datasouth	7.2.1	23-Mar-2011	13.9 MB	View Printer Models
Deztruma	7.2.1	23-Mar-2011	11.8 MB	View Printer Models
Domino	7.2.1	23-Mar-2011	7.4 MB	View Printer Models
Etron	7.2.1	23-Mar-2011	7.6 MB	View Printer Models
enjoyid	7.2.1	23-Mar-2011	7.5 MB	View Printer Models
ETISYS	7.2.1	23-Mar-2011	19.7 MB	View Printer Models
General Code	7.2.1	23-Mar-2011	7.5 MB	View Printer Models
Godex	7.2.1	23-Mar-2011	11.6 MB	View Printer Models
Graphic Products	7.2.1	23-Mar-2011	9.4 MB	View Printer Models
GSK	7.2.1	23-Mar-2011	9.5 MB	View Printer Models
HallamsonTyton	7.2.1	23-Mar-2011	7.5 MB	View Printer Models
IBM	7.2.1	23-Mar-2011	7.4 MB	View Printer Models

3. Setup

(After you have installed the printer driver)



Right click on this icon and select "Printing preferences".

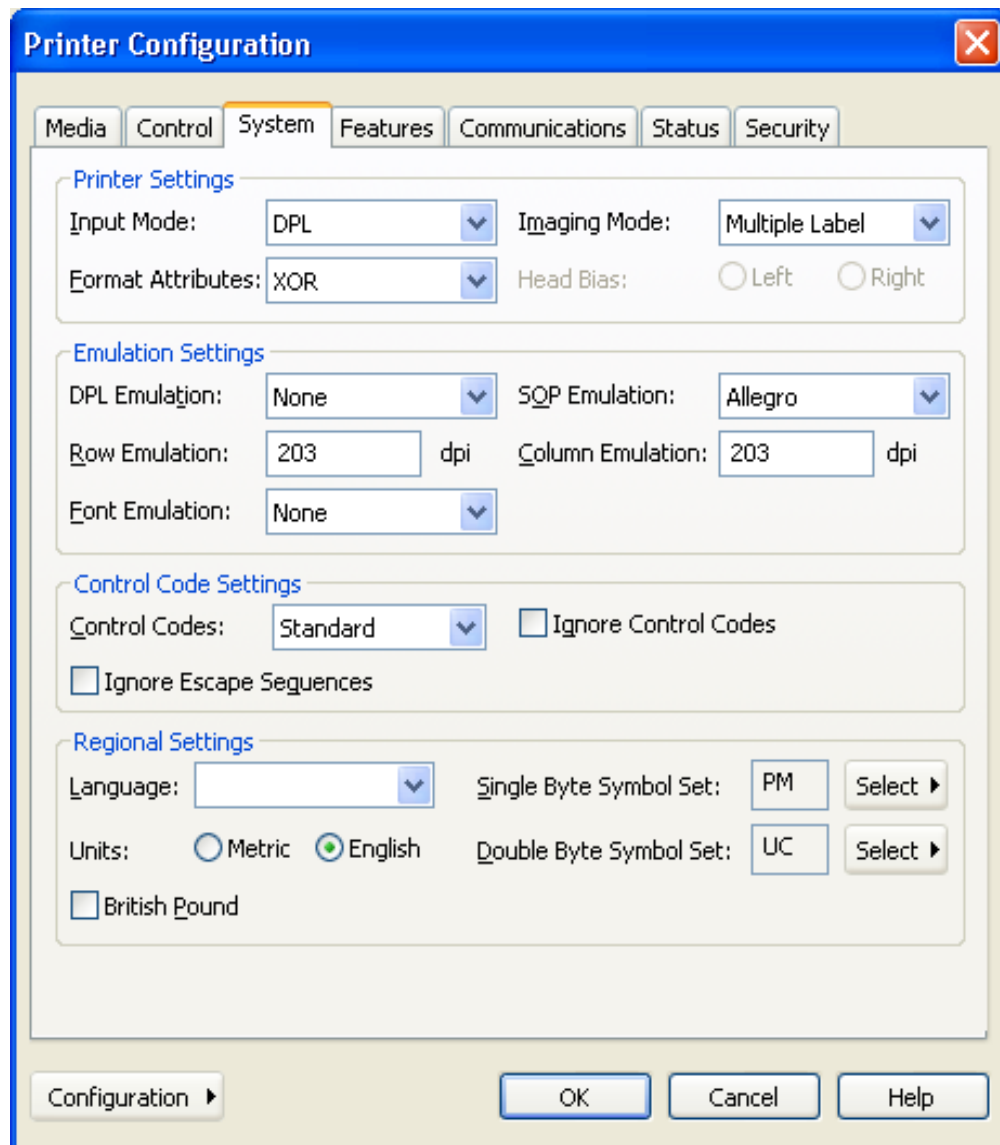


Set the stock size to be "Multipurpose, 2¼ x 5½".

Two more important settings to check are SOP Emulation and Present Sensor:

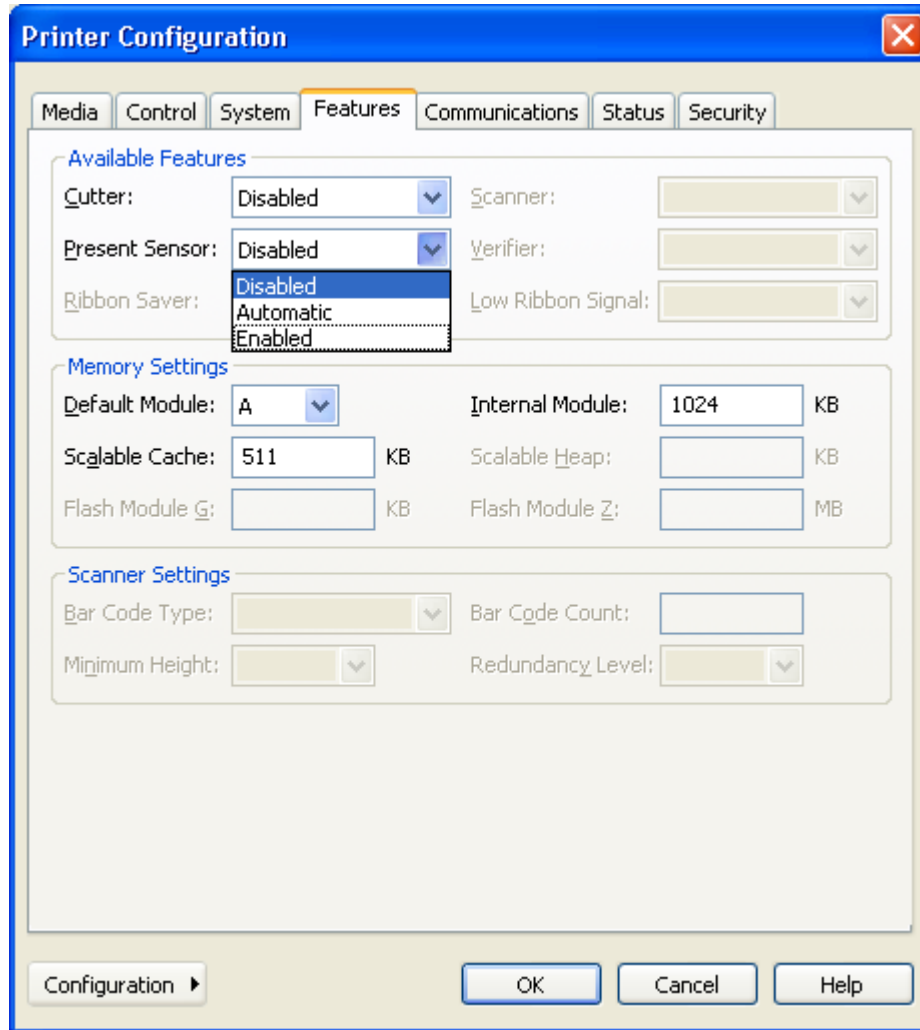
SOP Emulation

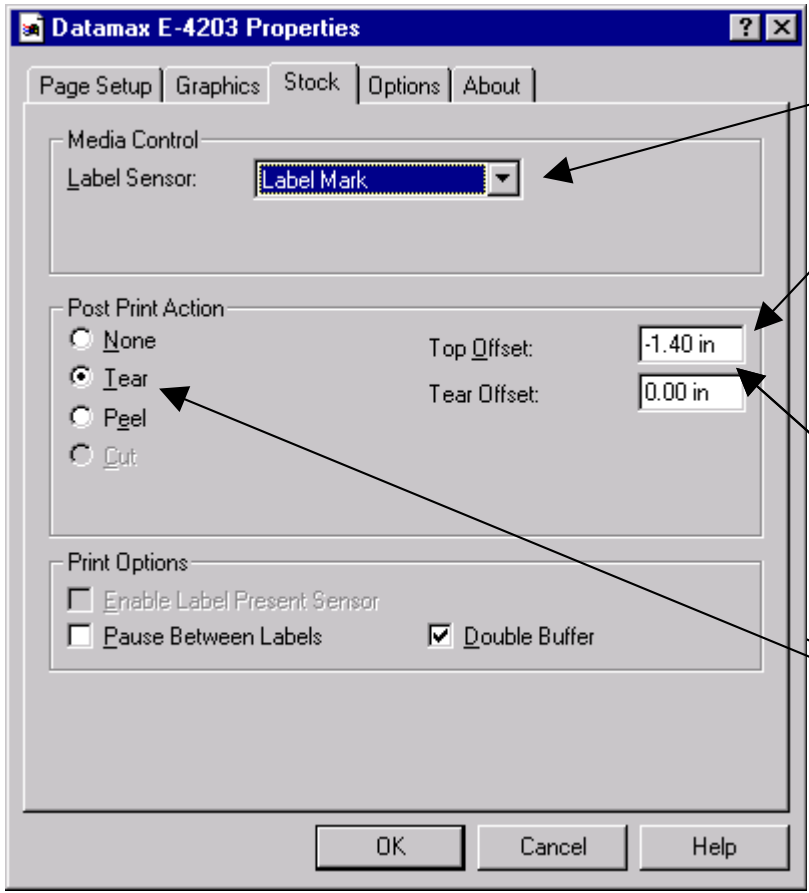
- While in the Datamax driver, do a right click under Properties
- Select Tools | Configure | Configure Printer | System tab. Under
- Under SOP Emulation, choose Allegro. Note: this is usually defaulted as “disabled.”



Present Sensor

- Again, while in the Datamax driver, do a right click under Properties.
- Select Features tab.
- Check to make sure “Present Sensor” is enabled. Note: this is usually defaulted as “disabled.”





- Set the label sensor to be 'Label mark.'

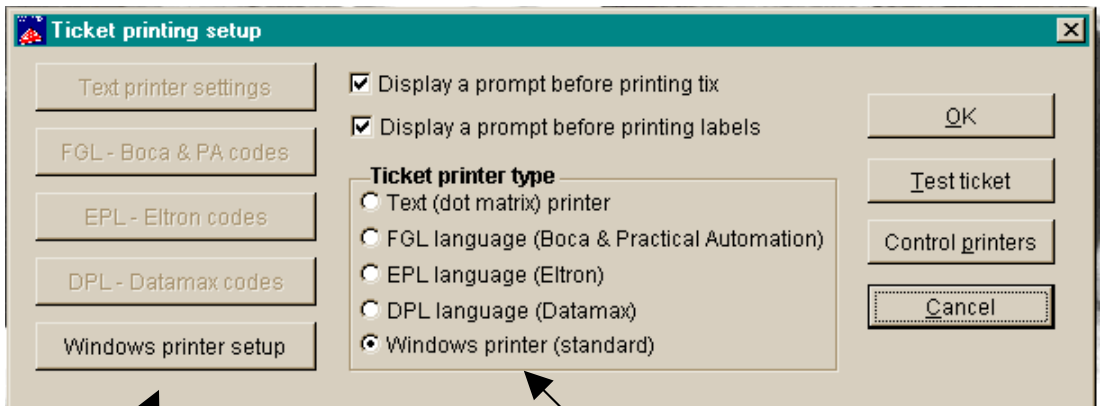
Set the top offset to be -1.40. This setting can be changed. **See Note.**

With Datamax v 5 firmware: Top offset 4.27; Tear offset 4.98.

NOTE: These settings are guidelines. On Center Stage Software's setup, we changed Top Offset to 0.00.

- Set the post print action to 'Tear' and the tear offset to 0.00. This is one place where you may want to change things later.

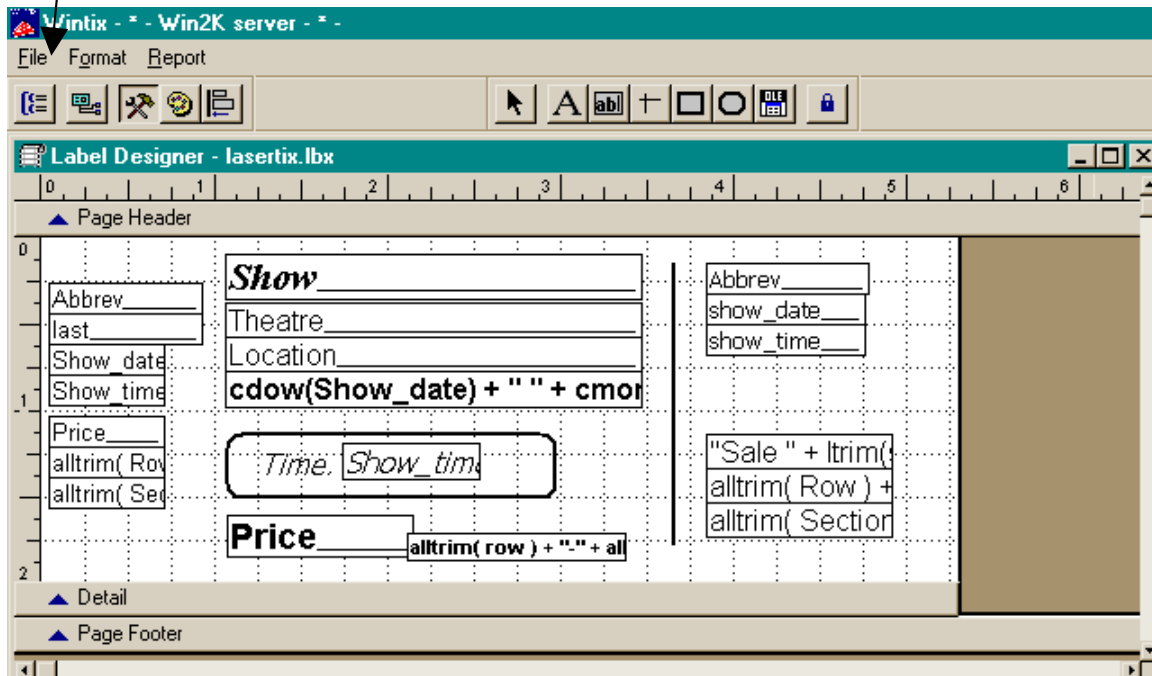
Setting up a Windows printer with Wintix



- Click on this button to bring up the label designer.

- Select Windows printer (standard) Yes, that's right – even though you are using a Datamax.

- Click here on File | Page Setup | Print setup
- This is what attaches the ticket to the ticket printer. You must go through this step so the tickets will default to the ticket printer and not the report printer.



Some notes:

1. If your logo is upside down, DON'T PANIC. You probably have the stock in backwards. Take the stock out, turn the stack upside down, and put it back in. If you have a new batch of stock, the logo really may be in upside down. On the 'Page setup' page, change the orientation to 180°.
2. Print drivers change every time Microsoft comes out with a new service pack. For the latest, check SeagullScientific.com (Hint: Seagull Scientific is a good source for print drivers for all kinds of printers).
3. If the printer stops between each ticket, make sure the 'Pause between labels' box is not checked. Then, turn the printer off and on.
4. The black line sensor is on the bottom left side of the paper path (when you are facing the printer). Therefore, the black line must be on the bottom left edge of the ticket stock when it comes out.
5. If one edge of the tickets is printing lightly, adjust the green thumbwheel on the right side of the printhead.
6. Occasionally, a printer will print fine under Tixsales but print blank tickets with Wintix. If you have this happen, you need to go to the 'Storage Memory' tab and click on the 'Memory configuration' button. Change the 'RAM module allocation' to 84K and the 'Scalable font cache' to 64K.
7. Occasionally, a printer will ignore the black line sensor and insist on using the edge (gap) sensor. This behavior manifests itself by the printer printing the first ticket properly, ejecting 1½ blank tickets, and stopping with a red error light. If this happens to a printer, look in section 4.4 of the Datamax E-class manual. Use the buttons on the printer to change the sensor type setting to (REFL) reflective.

8. Occasionally, a printer will need to be reset to factory defaults. To do this, turn the printer off. Then, hold down F1 and F3 while turning it on. This resets the printer.
9. The "Tear offset" is how far the ticket sticks out at the end of the print job. Before the start of the next print job, it gets pulled back in so the ticket can print from edge to edge. Normally, the settings in this setup sheet are sufficient. However, the position of the black line can vary up to 1/8". Occasionally, you will change to a new batch of tickets and the tickets will be pulled back so far into the printer that the rubber pinch rollers lose their grip of the stock. All the ticket sellers notice is that the printer is trying and not succeeding in pushing the stock through. The solution is to adjust the top offset.

Additional notes for Tixsales users and Wintix (using the DPL language):

1. With the Datamax printer codes, you need to know where the start point is. It should be on the perforation. If not, you probably are feeding the stock from the wrong end of the stack.
2. Datamax printer codes are similar to the FGL codes in that they have a row and column designator. They are different in that they also contain information about the font, rotation, horizontal, and vertical multipliers. Take a look on page 65 of EDPL.pdf (on the Datamax CD). It will give you some vague hints.

The title of the show gets sent to the printer like this:

4911A1400500040Hello Dali

The codes are formatted like this in Tixsales:

4-9-1-1-A14-0050-0040

Here's what it means:

4 = Rotation

9 = Font ID

1 = Width multiplier

1 = Height multiplier

A14 = Font size ID. In this case, the A14 specifies the smooth, proportional font, size 14 point. If you had wanted a monospace font, you would have entered a "005" (see table C-3 in the EDPL.pdf for examples).

0050 = Row position - measured in inches (0050 corresponds to 1/2 inch)

0040 = Column position

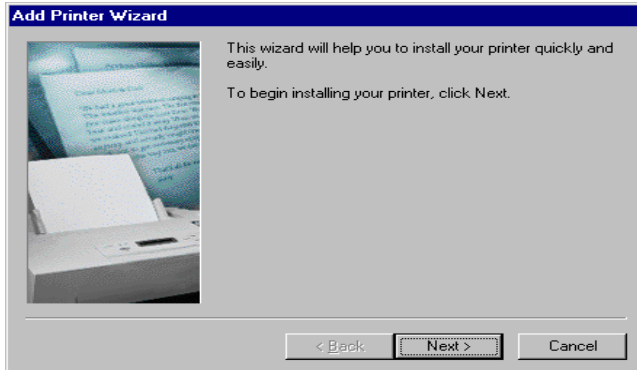
More notes:

1. The row and column are measured from the top and left edges of the ticket.
2. An explanation of the different types of bar codes available is on page 71.
3. You can print other things on the ticket like lines, boxes, circles and polygons if you can translate pages 72-75 of EDPL.pdf into English.
4. If you are using Windows XP, you will probably need the Datamax "pass-through" driver. This is a print driver that does not do anything. It simply takes the characters it receives and passes them to the printer. This is something that XP refuses to do. The only catch with this driver is that you need to go to the printer icon properties. Click on the Settings tab. Select the option, "Add a carriage return and line feed."
5. In order to use these codes, you will need to install the "Datamax Pass Through" driver. This is a special print driver that is unique in that it does not do anything. It just passes the codes to the printer. This is necessary with most versions of Windows (like XP) because Windows will not allow things like character 2's to pass. It simply removes them.
The Pass Through driver is also useful with other printers if you are using a Windows printing format. Many times, the Windows text drivers give problems that can be fixed by sending the proper codes to the printer.

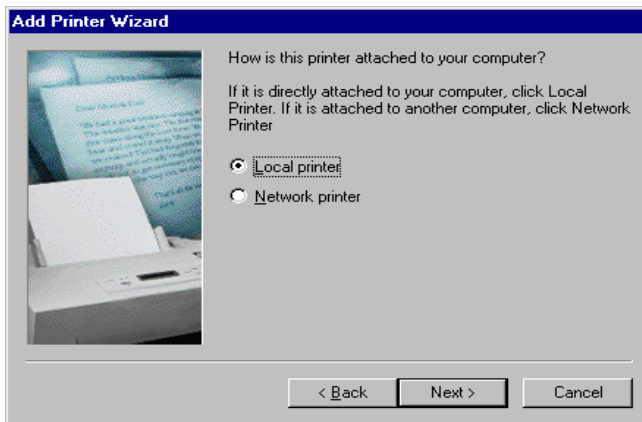
Why would you bother with all this complication? Speed and reliability. Using the Datamax as a text based printer will save you about 1½ seconds per ticket. If you are printing more than 250 tickets per day, you will probably want to do things this way. In general, the Windows printing system is fairly reliable, but it can cause trouble. In those cases, the only way to get the printer working is with this method.

Windows 95, 98, XP Pro and Windows 7 print driver installation:

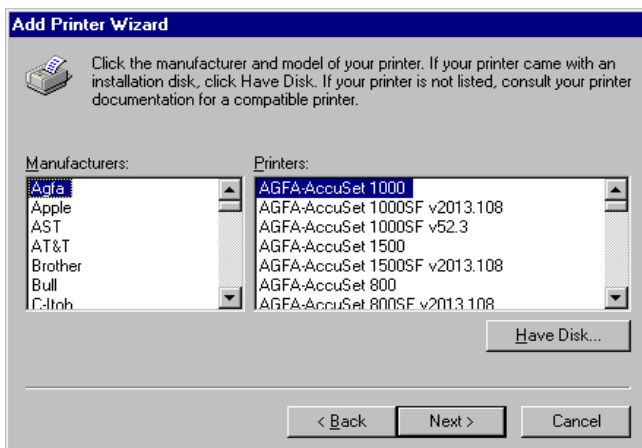
Most things are the same with Windows 95, 98, XP Pro and Windows 7. You still need to install the print driver. You still need to set the paper size, orientation, label mark, and black line offset. In fact, the only difference is that the screens look a little different.



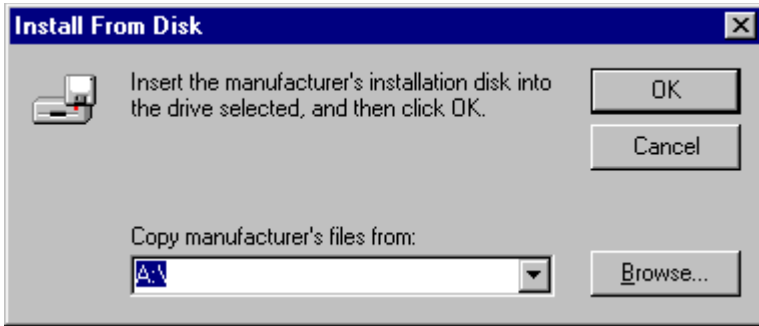
- Start the Add Printer Wizard.



- You will probably want it as a local printer.



- You will **not** see Datamax listed here in the list of printers.
- Click on the Have Disk button.

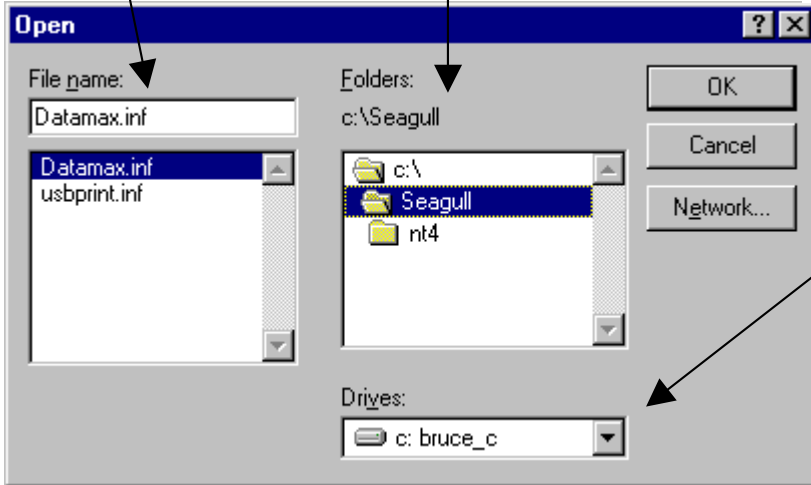


- Now, you need to know something. You need to know where the print driver is. This may be on the original Wintix CD. You may want to download and install the latest driver from <http://www.SeagullScientific.com>.

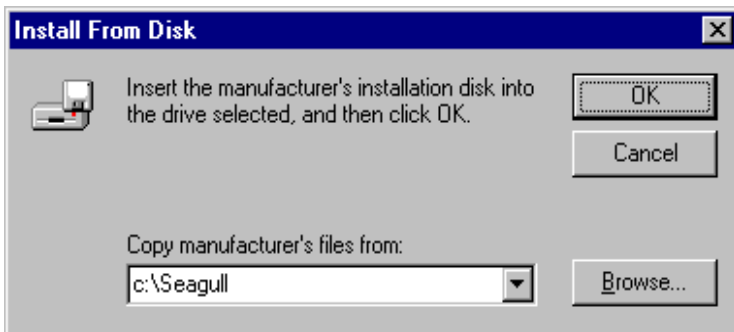
- In this case, we have downloaded a new driver to C:\Seagull.

- Click on the browse button and we will find the driver.

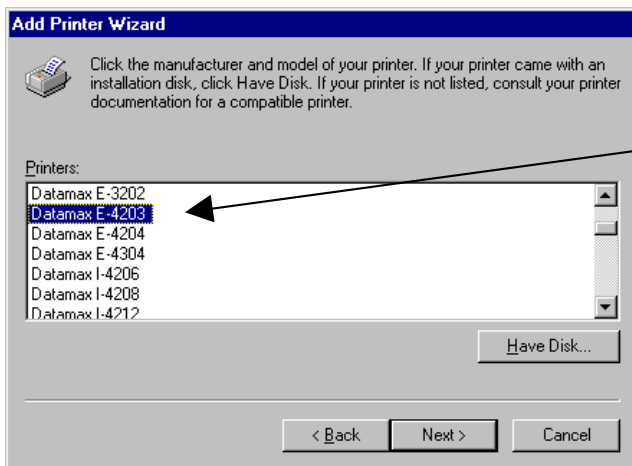
- Driver name
- Location of the driver



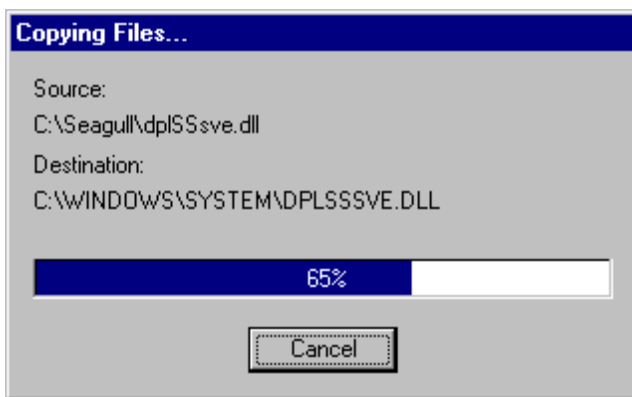
- Select the hard drive here.



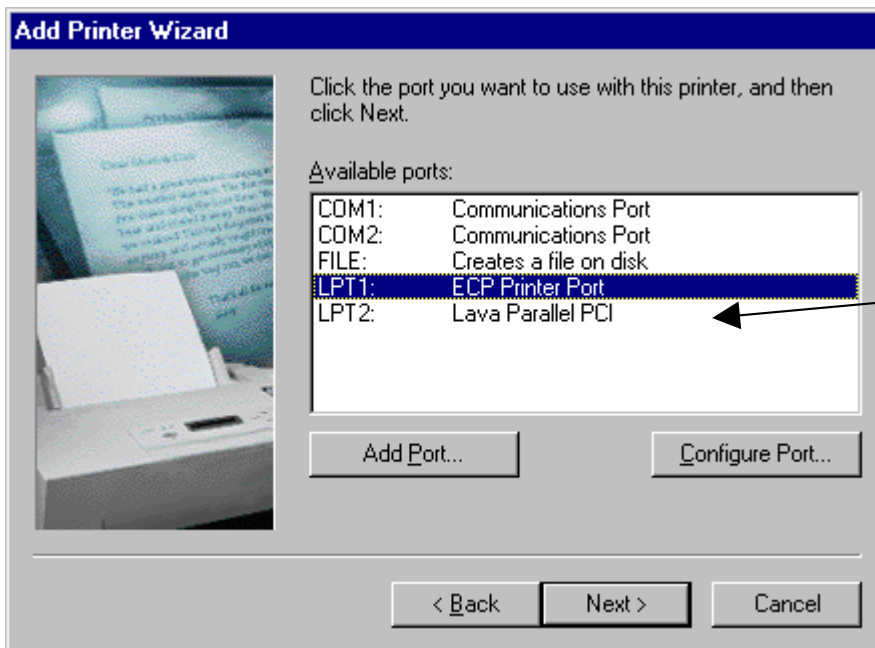
- Windows is ready to copy the files necessary for the driver.



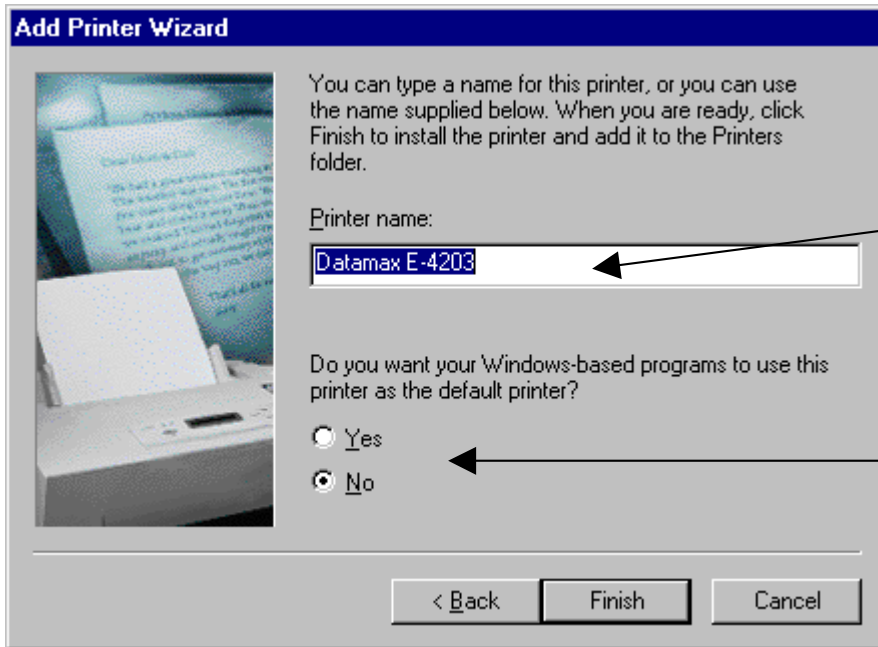
- Select the model of printer.



- The drivers get copied.



- You need to know what printer port the printer gets connected to.



- Give the printer a name that makes sense to you.
- No, you do not want the ticket printer to be the default printer.
- The default printer needs to be your report printer.
- Click on Finish and you are done.

Datamax Troubleshooting

1. Turn the printer on. Does it have a green light?
2. Press the Feed button. Does it advance 5½” and stop with a green light? Press the Feed button again. Does it consistently advance 5½” and stop?
3. Send **DmTest.txt** to the printer from DOS. Do you get Hello world? Does the printer stop in the right place? Is the movement consistent?

Here's what's in the file DmTest.txt (“~” stands for a character 2):

```
*****
* Datamax test file
* Usage: At a command prompt type:
*
* TYPE DMTEST.TXT > LPT1
*
~r          reflective sensor
~f190      backfeed 1.9”
~O0100     top of form offset
~L         enter label printing command set
H15       heat #15
D11       dot size 1 x 1
4911A4800500100 Hello world
4911A1200000150 |<-- left margin
E         eject the print job
```

This command **HAS** to work. If it does not, there is a problem with the printer. Note: USB printers will not respond. Even when you send these codes with Windows Notepad USB printers will not respond.

4. Do a test ticket. Look at the printing. Is it consistently dark, across the ticket?

Occasionally, the printer may be a thermal transfer type of E class. You can identify this by the 2 rollers on top of the print head (for the ribbon). If this is the case, the media type needs to be changed from transfer to direct. Instructions:

1. Power up while holding the F1 button - until pause light goes off
2. Press F1 and release - this prints a status ticket
3. Press F2 until the red light flashes 1 time (for the media type setting) – this prints setting for the current setting number. If you want different settings, hold the F2 for the number of flashes corresponding to setting number.
4. Press F1 one time. This changes from thermal transfer to direct thermal (or whatever setting is selected) F3 will reverse the setting.
5. Press F1+F3 together. When the pause light goes off, do it again. This saves the settings and returns to the normal mode. The printer is back on line.

"F2 and counting the flashes is the key"

The sensor type (black line) setting is not stored in non-volatile memory. It needs to be re-sent with each print job.